



This issue

Page 1

- Introduction

Page 2-4

- Community Events

Page 5 - 6

- Events Posters

Pages 7- 8

- Whipton's What's On

Page 9

- Useful Contacts and Venues

Page 10-

- Wellbeing Exeter

Page 11

- Contact details

Hello from Jemima!



It's exciting to see spring arriving and, with it, people's energy to make wonderful things happen locally. There's lots to look forward to over the coming weeks, including plans for tree planting, a bat walk, a tree trail, and an Easter trail for the defib group.

It's lovely to see bulbs planted over winter beginning to come up, making the area feel brighter, and Whipton is also being brightened by Pete the Poet's beautiful murals.

There's already so much happening and we've only just started the year. If you have an idea for an activity, group or event you'd like support with, or if you'd like help connecting with what's happening locally, do get in touch. I'm here to support anyone who wants to try something new or get involved.

Best wishes

Jemima

Jemima Moore

Listening Post

Listening is an important part of a Community Builder's work. Here's what residents said at recent activities and events.

I'm so grateful for IT help. I'd struggled with that for ages and James was very patient and showed me how to do it.

It was lovely for my teen daughter to have the freedom to choose clothing without any worry about the cost. She loves her new outfits!

Such a wonderful idea -easy, sustainable way to refresh our wardrobes.

I love the new mural. It makes me smile every time I walk past.

Whipton Community Clothes Swap

The Whipton Community Clothes Swap was a real community effort, with Whipton Social Club, St Katherine's Priory, St Boniface Church, Whipton Hall and Whipton Chapel all acting as drop-off points.



Thousands of items were donated, and at the free event, hosted by Whipton Social Club, residents swapped coats, shoes and clothing for all ages. Volunteers sorted and organised everything, creating a welcoming atmosphere. Donations were collected for Louie's Helping Hands, with remaining items passed on to local charities.



Due to its success, another swap is planned for Reuse Week on Sunday 9 August. If you'd like to get involved and join the Whipton Clothes Swap Crew, do get in touch.



Whipton Freecircle



Another way to reduce waste locally is by joining the Facebook group Whipton Freecircle. It's a simple way for neighbours to pass on all sorts of unwanted items -furniture, clothes, toys, plants and much more.

With almost 800 members already, the more people who join, the better it works.

Reflexology Tasters

Visitors to the Friday Community Café at St. Katherine's Priory have been able to enjoy a little extra relaxation recently, thanks to free reflexology tasters offered by Alison from Rubicon Reflexology.



Alison first joined us in January and returned in March, with both visits proving very popular. She'll be back again on Friday 15th June, from 11am to 1pm. Do come along to enjoy a free taster and find out more.

Easter Fayre at St Katherine's Priory



The Easter Fayre at St Katherine's Priory was a truly special day. The brilliant volunteers' hard work and dedication made the day a great success. With a wide variety of stalls, a magic show, face painting, reflexology, and a train that now goes all the way around, there was plenty to enjoy.

It was a beautiful sunny day, and more than a thousand visitors came along to take in the stunning setting and everything on offer. Thank you to everyone who stopped to chat with me. It was great to share what's happening locally and hear ideas for what you'd love to see in the future.

We're already looking forward to the next fayre, which will take place this July.



Whipton Community Mural Project



A group of local residents have teamed up with Pete the Poet to bring bright, welcoming murals to Whipton. You can see the first beautiful mural on Whipton Village Rd. The group would love more Whipton residents to join the group.

You can also help by identify walls that could benefit from a mural. There'll be opportunities for the community to add to the artworks too. There are plans for children from Vranck House to help.

Get in touch if you'd like to be involved.



Community Champion Tree Planting



Community Champions at Bennett Square, Widgery Road and Barberry Close have been busy planting up planters and spring bulbs together, bringing some lovely colour to their neighbourhoods. They'll be coming together again on Sunday 29th March for a tree planting day, with a tree kindly donated by a local resident to fill an empty tree guard, alongside a community litter pick.

If you'd like to come together with neighbours near where you live to do something similar, do let me know.

Whipton History Detectives

The Whipton History Detectives group, led by historian Dr. Julia Neville, meets monthly to bring together local residents with a shared passion for Whipton's history. At the moment they're gathering information and identifying sources to contribute to a revised publication of the Discovering Whipton booklet, to be published by Exeter Civic Society. Member Rose Gander says: 'I was brought up in Whipton and have spent most of my life here. My interest is in interviewing people like me, who have experienced living in Whipton down the years.'

If you have memories of your own or your family to share, please get in touch. Your contributions will help preserve the area's history for the future.



The Whipton History Detectives meet at the ISCA café – and here's a photo of it in earlier times.

Can you guess the date by looking at the cars?

Whipton Pokémon GO

Did you know there are Pokémon GO Gyms, PokéStops and postcards around Whipton? Some local players are keen to get together to walk between PokéStops, battle Gyms, take part in raids and share tips.



Scan the QR code to join the Whipton Pokémon GO Facebook group and connect with other local Trainers, or contact [Jemima](#) for more information.



Whipton Defibrillator Group

The Whipton community defibrillator, on the outside wall of the Star Inn and registered with the South Western Ambulance Service, is available for use in cardiac emergencies — a life-saving resource for people in Whipton.

It's run by a brilliant group of volunteers. While its costs are currently covered for the next three years, fundraising will be needed to maintain and replace it in the future. The group is always looking for more people, particularly anyone with fundraising skills or links to relevant charities, to join their friendly team.

Please get in touch if you'd like to get involved.



@StKatherinesPriory



Stoke Hill Community Association
CHARITY NO. 2839C

at
St Katherine's Priory

1st Friday of the month

Doors open.....6.30pm
Eyes Down.....7pm

Raffle tickets and tea/coffee at half time

St Katherine's Priory, St Katherine's Road EX4 7JY
www.stkatherinespriory.co.uk SHCABookings@gmail.com



Stoke Hill Community Association
CHARITY NO. 283907

Craft 'n' Chat
FIRST SATURDAY
of each month

11AM-2PM

ST KATHERINE'S PRIORY
ST KATHERINE'S RD
EX4 7JY

COME & ENJOY SOME DOWN TIME
CRAFTING WITH OTHERS OVER A HOT DRINK

CONTACT MEL ON 07815 016806
Just £3



Easter
Good Friday fun

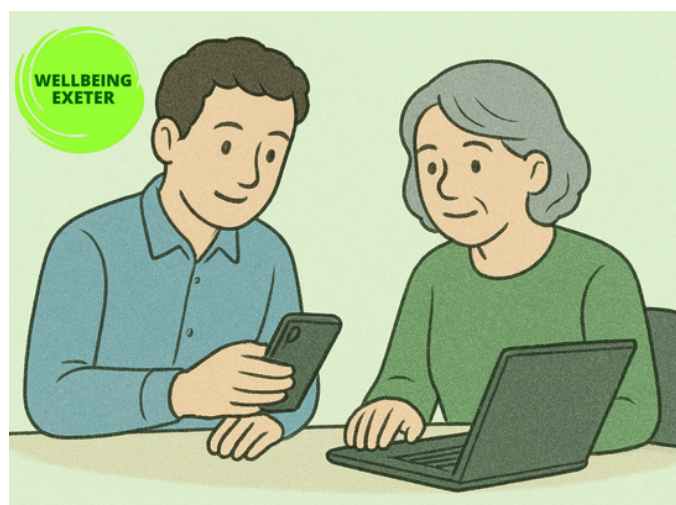
Friday 3rd April 10-12
Whipton Community Hall

Admission includes
Decorate an Easter crown to take home
Games - Prizes to be won - Easter egg hunt
Trail to win a chocolate egg

Child admission £4 Refreshments on Sale
Please book in advance due to Easter Eggs & catering
Limited number of tickets on sale

To book your tickets
www.ticketsource.co.uk/whiptoncommunityhall

All children must be supervised by an adult

Whipton IT Support

Drop In at St Katherine's Priory

11am - 12pm - Second Friday of the Month

Do you need help with your smartphone, tablet or laptop?
Our friendly volunteer can guide you, help to boost your confidence, and support you with everyday IT problems.

The community café will be open for refreshments.

Contact: 07966 992 393 jemima.moore@eci.org.uk Jemima Moore -Whipton

www.wellbeingexeter.org.uk



Whipton Easter Trail

Willow Way, Exeter EX4 8DY
Tuesday 7th April - 2:00 – 3:30pm

Pick up your Easter trail for just £1 and support the Whipton Defibrillator Group.
 Enjoy Easter-themed activities & treats
 and meet your Community Builder Jemima

Contact: 📞 07966 992 393 📧 jemima.moore@eci.org.uk 📱 Jemima Moore -Whipton

Mixed Walking netball Club.




🔍 I want to play....

- I want to play Walking Netball
- I want to play football
- I want to play badminton
- I want to play chess

THURSDAYS 7PM-8PM
 (DEPENDING ON PLAYER AVAILABILITY)

ST JAMES SCHOOL,
 EXETER

Message me on
07496180693 to Join Now

BREATHE

a space for parents of SEND children



come and join us on
Monday 9th February
Monday 9th March
Monday 20th April
Monday 11th May
Monday 8th June
 1:30pm

@
 St Boniface Church, Brookway, Whipton

Free Cuppa and cake.

email: sarah@whipton.church



Whipton Tree Trail

Saturday 11th or Tuesday 14th April 10-11am
Meeting point: Outside Whipton Village Shops
(next to Morrisons Daily)

Join a local tree enthusiast for a friendly tree trail around Whipton. Discover local trees and learn how to identify different species.
 Suitable for all ages (children with an adult).

Limited spaces—please sign up in advance with your Community Builder, Jemima Moore stating your preferred date

Contact: 📞 07966 992 393 📧 jemima.moore@eci.org.uk 📱 Jemima Moore -Whipton

www.wellbeingexeter.org.uk



What's on: Whipton

Monday

- 10.00am-12.00pm Volunteer Gardening & Maintenance - St Katherine's Priory
- 1.30pm-3.30pm Whist (Part of Isca Bowls) Isca Centre
- 1.30pm-2.30pm Breathe support group for SEND families - St Boniface Church - Free
- 7.00pm The Junction 72A Model Railway Club - St Katherine's Priory - Membership

Tuesday

- 10.00am-.003pm Exeter and District Model Engineers - St Katherine's Priory
- 1.30pm Whist Drive (Fortnightly) - St Katherine's Priory
- 6.15pm The Bridge Club Isca Centre - contact 01392 462833
- 6.30pm Taster Sessions- Isca Indoors Bowling club, Isca centre- First session free
- 7.00pm-8.00pm Women on the Run - Exeter Arena £2
- 7.15pm-9.30pm Social League Skittles - Whipton Social Club - Membership
- 8.30pm-11pm Tuesday League Darts - Whipton Social Club - Membership

Wednesday

- 9.30am-12.00pm Painting for Pleasure - Whipton Hall £4
- 10.00am-12.00pm Community Coffee Morning - The Star Inn, Whipton
- 3.00pm-4.30pm School Run Cafe - St Boniface Church
- 5.00pm-6.00pm Premier League Kicks - St James School (ages 11-18 yrs) -Free
- 6.45pm-10.30pm Free Pool - Whipton Social Club - Membership
- 7.00pm-9.00pm Woman's Netball - St James School £6

Thursday

- 10.00am-11.30am The Well Community Cafe - St Boniface Church- Free
- 10.00am-11.30am -Parent and Toddler Group - Whipton Chapel -Free
- 11.00am-11.45am Age UK Seated Exercise - Whipton Hall £6
- 6.45pm-9.00pm Bingo - Isca Centre
- 7.00pm-8.00pm Walking Netball - St James School £3
- 7.00pm-9.30pm The Junction Model Railway Club - St Katherine's Priory
- 7.30pm-9.00pm Community Voices Choir. Alternate Thursdays - Whipton Community Hall
communityvoiceschoir@gmail.com £3.50
- 7.30pm-9.30pm Prize Bingo - Whipton Social Club - £1 per book

See venue information on the last page.



What's on: Whipton

Friday

- 10.00am-2.00pm Community Café - St Katherine's Priory
- 11.00am-12.00pm Whipton IT Support -Free Drop In - St Katherine's Friday - 2nd Friday of the month
- 12.00pm-3.00pm Lunch club (part of Isca Bowls Club) - Isca Centre Membership
- 12.30pm-1.30pm Family History Research - Free Drop In - St Katherine's Priory 1st Friday of the month
- 4.30pm-5.30pm - Isca Church & Police Youth Football Academy - St James School- Free
- 6.00pm-7.00pm - Whipton Football FC - Willowbrook School (Under 8's) Free
- 6.00pm-7.30pm Launch Pad Children's club - Willowbrook School
- 6.15pm - Junior Youth Group (Year R - Year 6) - Whipton Chapel
- 7.45pm - Senior Youth Group (Year 7 - Year13) - Whipton Chapel info@whiptonchapel.org
- 6.30pm - Prize Bingo - St Katherine's Priory (first Friday) £1 per book
- 7.00pm-8.00pm - Walking Football - St James High School £10 per month
- 6.45pm-9.00pm- Tag Rugby- Exeter Arena £5
- 7.15pm and 9.00pm Skittles (in house league) Whipton Social Club -Membership
- 7.30pm-11.00pm Darts - Whipton Social Club - Membership

Saturday

- 11.00am-2.00pm Craft & Chat - St Katherine's Priory (first Saturday of the month) £3
- 7.00pm Quiz Night St Katherine's Priory email st.katherinespriory@gmail.com £5

Sunday

- 11.00am-3.00pm Exeter Miniature Railway - St Katherine's Priory (first Sunday of every month)

What else would you like to see in Whipton?



I've heard some fantastic ideas from local residents, including a Family Rounders game, Tree Walk, Family Open Mic sessions, Whipton Bake Off, Dawn Chorus walk, a school holiday playgroup, ladies' clothes swap, a women's group, book club, jumble sale, butterfly walk, and a dog walker social. There's clearly a lot of imagination and care in the community.

If any of these sound like something you'd like to be part of, I can help connect you with others and offer support to get things started. Or if you have a different idea for a group or event you'd love to make happen, I'm here to help —just get in touch!



Wellbeing Exeter

Wellbeing Exeter is a collaborative partnership of organisations working together to promote and improve the wellbeing of people individually and in their neighbourhoods, to make the community a better place to live.

Community Connecting

One to one support for adults in Exeter plus adults, families



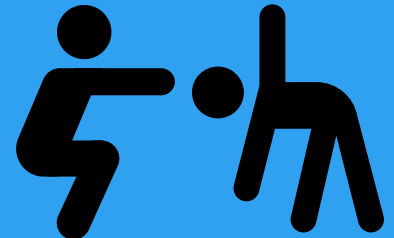
Community Building

Support people in their local neighbourhood to grow their ideas and try new things that bring people together



Community Physical Activity Organisers

Connect people to become more active and support neighbourhoods to get physical activity ideas off the ground



Community Engagement

Project Coordinators work with communities and local networks in priority areas to meet specific needs by creating new opportunities in walking, cycling, leisure services, and community engagement



Find out what's on locally at our new website

www.yourlocalexeter.org.uk

**YOUR LOCAL
EXETER**



www.wellbeingexeter.org.uk

Get Social



Keep up-to-date by joining these local Facebook pages and groups.

- St Boniface Church
- St Katherine's Priory
- Friends of Summerway
- Widgery Road and Bennet Square
- Whipton Community Group
- Whipton Hall
- Dungeons and Dragons
- Whipton to Wonford Community Group
- Polsloe to Pinhoe
- Barberry Close Little Library

Contact Details for Venues

- Holy Trinity Church- office@whipton.church
- Whipton Hall admin@whiptonhall.com
- St Katherine's Priory 07467079452
st.katherinespriory@gmail.com
- Isca Centre-Summer Lane - 01392 265390
- St Boniface Church - info@whipton.church
- The Star Inn - 01392 466128/ 07497578661
- The Whipton Social Club 01392 201273



Useful contacts

Exeter City Councillors

- Liz Pole - 07485 194779
cllr.liz.pole@exeter.gov.uk
- Ruth Williams - cllr.ruth.williams@exeter.gov.uk
- Tony Payne -cllr.tony.payne@exeter.gov.uk.

Devon Country Councillor:

- Jack Eade - jack.eade@devon.gov.uk
- St James School 01392 209922
- St Lukes School 01392204600
- Willowbrook School 01392 466208
- Whipton Barton School 01392 467566
- Report a problem- Exeter City Council
<https://exeter.gov.uk/clean-safe-city/>
- Report a problem- Devon Country Council
<https://www.devon.gov.uk/roads-and-transport/report-a-problem/>

Useful Information

- Parental Minds gives support to families who are struggling with their mental health
<https://parentalminds.org.uk/>
Tel: 07907 614 516
- Domestic Violence Splitz Devon Helpdesk
Tel: 0345 1551074.
- Talk works Tel: 0300 555 3344
www.talkworks.dpt.nhs.uk
- Mental Health Mind charity
Tel: 0300 123 3393
- The Moorings @ Devon - Out of hours mental health support for 16+. www.mhm.org.uk/the-moorings-devon
Tel: 07990 790 920
- Andy's Man Club - Talk through problems that men face. Monday evenings, 7pm.
www.facebook.com/AndysManClubExeter/
- Age UK Exeter Tel: 01392 202092
- Adult Social Care team Tel: 01710 424000
Out of hours Tel: 01720 422699
- Care Direct - 0345 1551 007
- NHS Chat Health - Health Visitor confidential text messaging service www.chatline.nhs.uk
- Home-Start - Support for families with young children www.homestarteemd.org.uk/
- Exeter Food Bank exeterfoodbank.co.uk/

About Wellbeing Exeter



Wellbeing Exeter is a collaborative partnership of organisations working together to promote and improve the wellbeing of people individually and in their neighbourhoods, to make the community a better place to live.

Community Builder

Name: Jemima Moore (Whipton)

Phone: 07966 992 393

Email: jemima.moore@eci.org.

Facebook: Jemima Moore Community Builder [Click here](#)

Community Physical Activity Organiser (CPAO)

Name: Charlotte Flavell

Phone: 07926 127824

Email: Charlotte.Flavell@ecct.co.uk

Facebook: CPAO Exeter North