

Prevention...?

... or early intervention?

Figure 22: Is there any help you think could have been provided that would have stopped you becoming homeless?

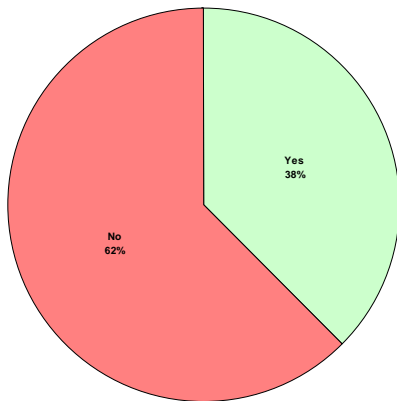
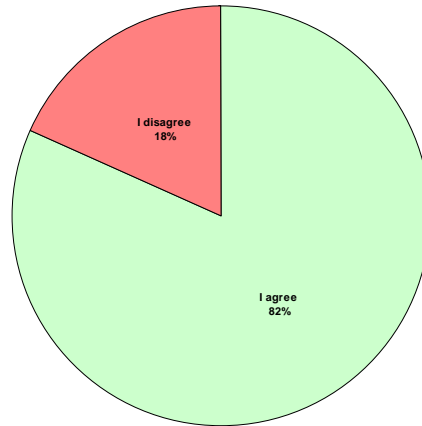


Figure 23: Exeter City Council has decided that projects that try to prevent people becoming homeless should be a priority for future funding. Do you agree with this decision?



Q13: Favoured opening times by Service

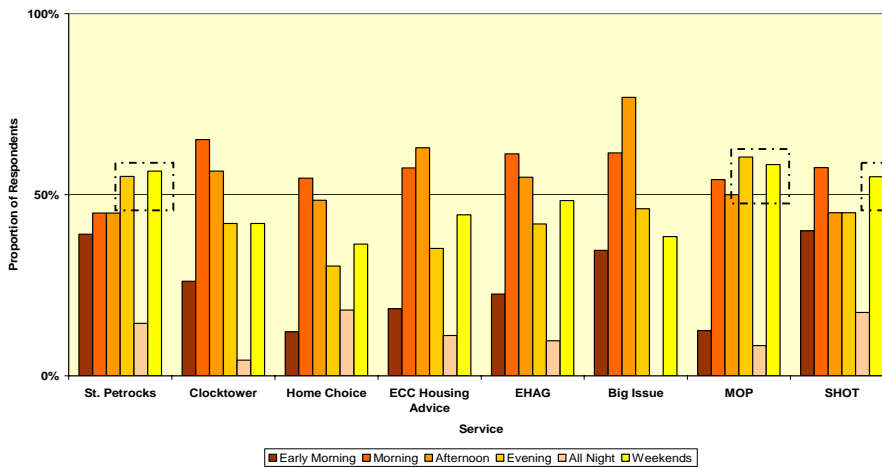


Figure 6: Aspects of named services rated as 'difficult to use' by respondents

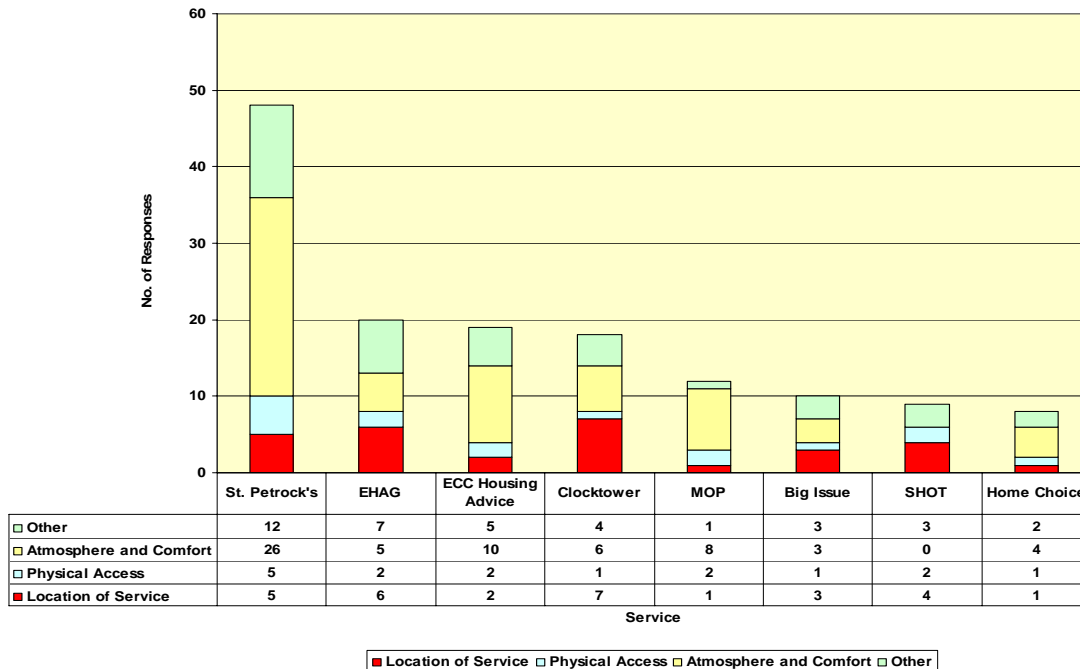


Figure 24: Number of respondents supporting each option (Exeter City Council Homeless Strategy)

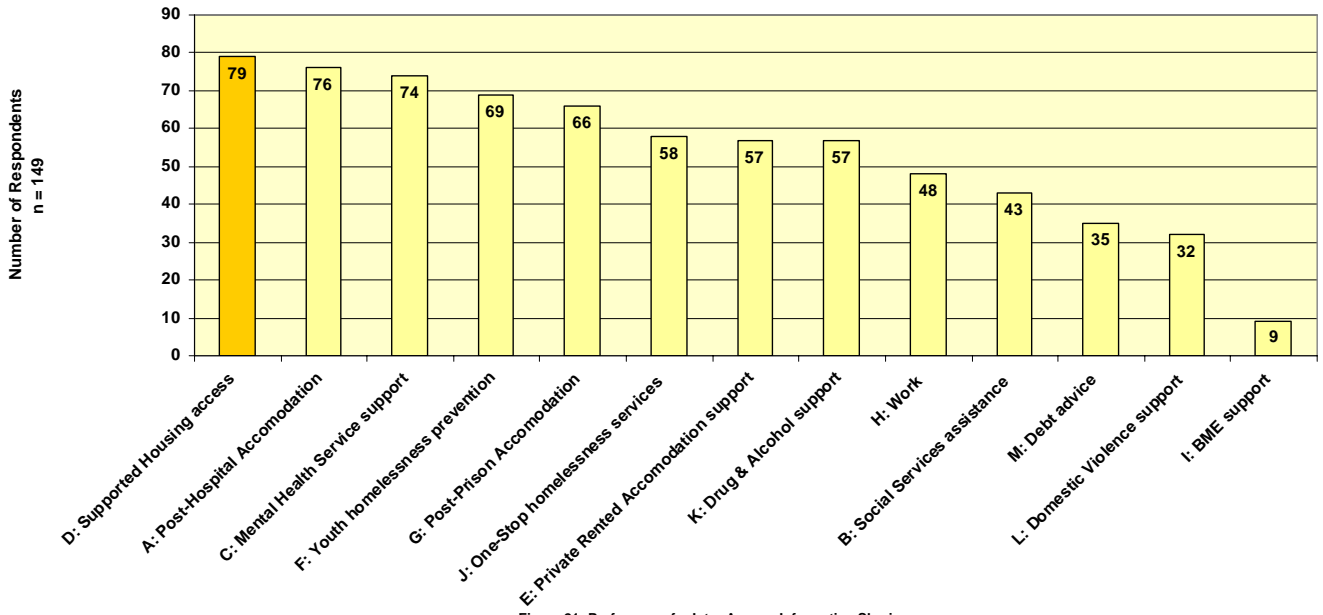


Figure 21: Preferences for Inter-Agency Information Sharing

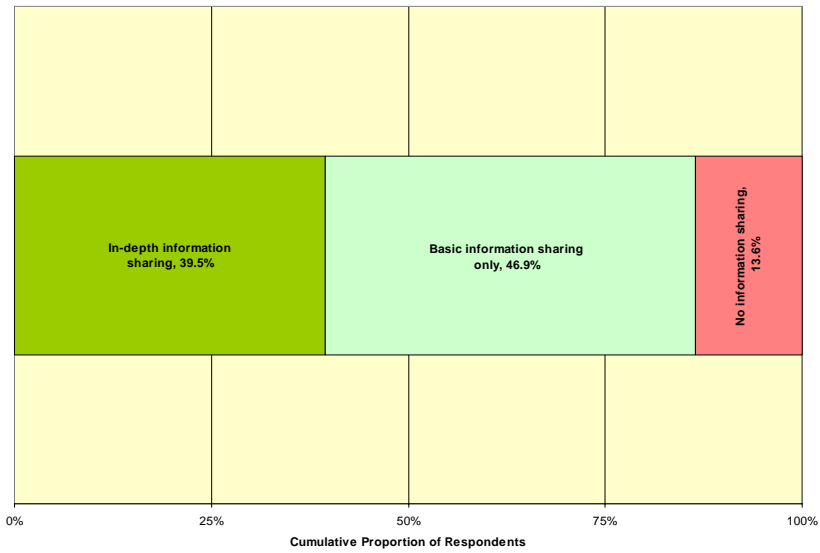


Figure 11: Gross Satisfaction Scores by Service

